

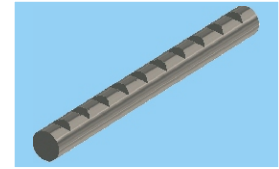


DRAWINGS SCALE: 1/1

MATERIAL: Iron wire, tensile strength 105 to 125 Kp/mm<sup>2</sup>

2

FINISHING: Burs-free and smoothed



**TERMINAL WIRE POSTS**

-Two rows of stamped notches, diametrically opposite.

-DIMENSIONS: *D x L (In tenths of millimetre)*

*D = Diameter post*

*L = Total length*

10406  
4 x 60

10606  
6 x 60

10607  
6 x 70

10610  
6 x 100

10620  
6 x 200

10807  
8 x 90

10808  
8 x 95

10810  
8 x 100

10809  
8 x 105

10811  
8 x 115

10812  
8 x 120

10815  
8 x 150

11007  
10 x 90

11008  
10 x 105

11009  
10 x 110

11011  
10 x 115

11012  
10 x 120

11013  
10 x 125

11018  
10 x 130

11014  
10 x 135

10027  
10 x 140

11021  
10 x 145

11015  
10 x 150

11017  
10 x 155

11016  
10 x 160

11028  
10 x 170

11023  
10 x 175

11024  
10 x 180

11019  
10 x 190

11020  
10 x 200

11022  
10 x 205

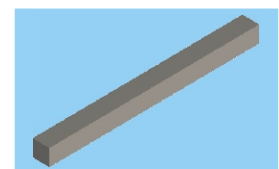
11026  
10 x 220

**SQUARE TERMINAL WIRE POSTS**

-DIMENSIONS: *A x L (In tenths of millimetre)*

*A = Square side*

*L = Total length*



11946  
6 x 60

11940  
6 x 110

11933  
7 x 75

11935  
7 x 115

11929  
8 x 100

11924  
8 x 120

11925  
8 x 125

11927  
8 x 130

11928  
8 x 140

11931  
8 x 200

11915  
10 x 140